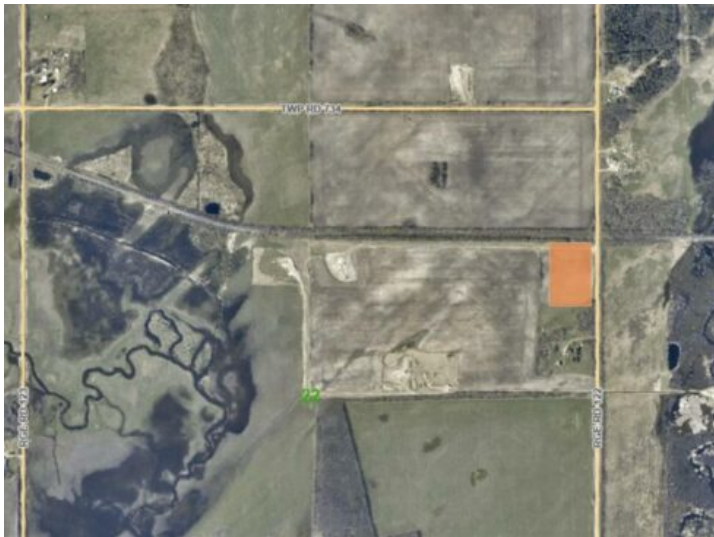


**PT NE-22-73-12-W6**  
**Rural Grande Prairie No. 1, County of, Alberta**

**MLS # A2120994**



**\$60,000**

---

**Division:** NONE

---

**Lot Size:** 5.96 Acres

---

**Lot Feat:** -

---

**By Town:** Hythe

---

**LLD:** 22-73-12-W6

---

**Zoning:** CR-5

---

**Water:** -

---

**Sewer:** -

---

**Utilities:** -

---

5.96 acres. 1.7 miles off pavement near Lymburn designated residential vacant land. Subdivision has been approved and is close to completion. 6-7 miles from unlimited crown land!