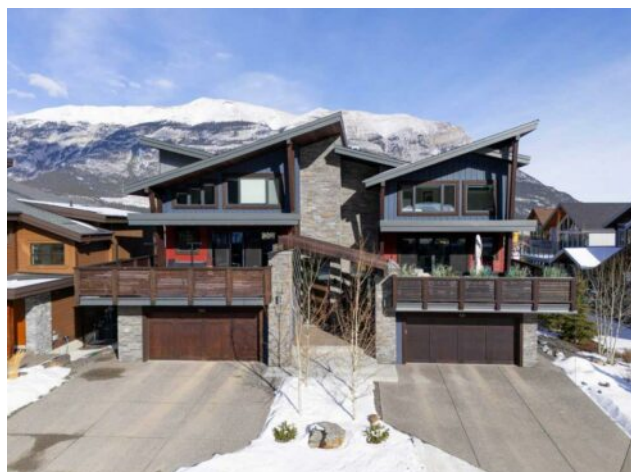


**510 Stewart Creek Close
Canmore, Alberta**

MLS # A2196458



\$2,547,000

Division:	Three Sisters		
Type:	Residential/Duplex		
Style:	3 Level Split, Side by Side		
Size:	2,574 sq.ft.	Age:	2021 (4 yrs old)
Beds:	4	Baths:	3 full / 1 half
Garage:	Double Garage Attached, Garage Door Opener		
Lot Size:	0.17 Acre		
Lot Feat:	Back Yard, Garden, Landscaped, Views		

Heating:	In Floor, Fireplace(s), Forced Air, Natural Gas, Radiant	Water:	-
Floors:	Carpet, Hardwood, Tile	Sewer:	-
Roof:	Asphalt Shingle	Condo Fee:	-
Basement:	Separate/Exterior Entry, Finished, Full, Suite, Walk-Up To Grade	LLD:	-
Exterior:	Mixed	Zoning:	Residential
Foundation:	Poured Concrete	Utilities:	-

Features: Bar, Beamed Ceilings, Breakfast Bar, Built-in Features, Chandelier, Closet Organizers, Crown Molding, Double Vanity, Dry Bar, French Door, High Ceilings, Kitchen Island, Open Floorplan, Quartz Counters, Recessed Lighting, Soaking Tub, Storage, Vaulted Ceiling(s), Walk-In Closet(s)

Inclusions: na

Perched in the prestigious enclave of Three Sisters, this masterfully crafted sanctuary seamlessly blends sophistication and timeless elegance. Meticulously renovated in 2024, this 4-bed, 4-bath residence includes a suite and spans over 2,500 sq. ft creating an unparalleled living experience. The heart of the home is the expansive great room, where 16-foot timber-beamed ceilings, a striking two-story stone gas fireplace, and floor-to-ceiling windows frame breathtaking panoramic mountain views. Just beyond, an oversized south-facing deck which extends the living space outdoors, offering an ideal setting for both tranquil mornings and unforgettable gatherings. The chef's kitchen is a reimagined masterpiece, where Tartufo quartz countertops, custom cabinetry, and a sophisticated bar area set the stage for an elevated culinary experience. The space is fully equipped with a state-of-the-art Miele appliance package, including an induction cooktop, built-in coffee maker, dual convection steam ovens, dishwasher, and two under-counter wine fridges, seamlessly blending refinement with exceptional functionality. The primary suite is a private sanctuary, occupying its own exclusive level and features a luxurious five-piece ensuite, office nook, laundry and a spacious walk-in closet with bespoke custom built-ins. The lower level features a beautifully appointed, self-contained one-bedroom suite, with in floor heating offering an exceptional retreat for guests or a prime rental opportunity. The professionally landscaped lot is a private sanctuary, designed with extensive stonework, retaining walls, and an integrated irrigation system, creating a serene setting to enjoy the secluded hot tub. Recent enhancements elevate the home's comfort and functionality, including new hardwood and carpeting, custom blinds, a

high-efficiency hot water tank, and the convenience of laundry on every floor. This is a rare opportunity to own an exceptional mountain retreat, where luxury and tranquility unite.