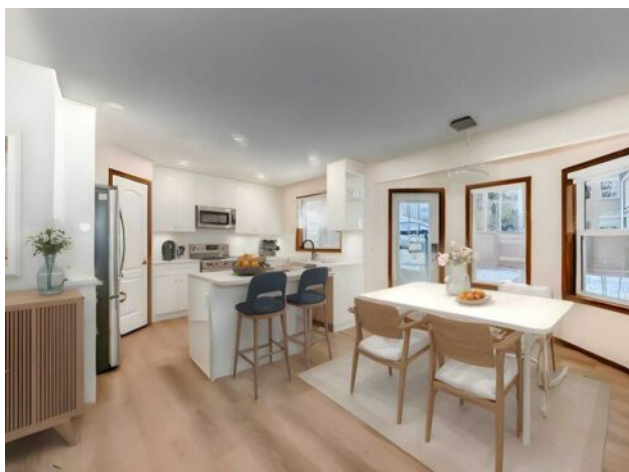


27 Douglas Park Place SE
Calgary, Alberta

MLS # A2202826



\$829,000

Division:	Douglasdale/Glen		
Type:	Residential/House		
Style:	2 Storey		
Size:	2,160 sq.ft.	Age:	1996 (29 yrs old)
Beds:	5	Baths:	3 full / 1 half
Garage:	Double Garage Attached		
Lot Size:	0.14 Acre		
Lot Feat:	Back Yard, Cul-De-Sac, Front Yard, Garden, Gazebo, Lawn		

Heating:	Forced Air, Natural Gas	Water:	-
Floors:	Carpet, Linoleum, Vinyl	Sewer:	-
Roof:	Asphalt Shingle	Condo Fee:	-
Basement:	Finished, Full, Walk-Up To Grade	LLD:	-
Exterior:	Vinyl Siding, Wood Frame	Zoning:	R-CG
Foundation:	Poured Concrete	Utilities:	-
Features:	Built-in Features, No Animal Home, No Smoking Home, Open Floorplan, Quartz Counters, Sump Pump(s)		

Inclusions: N/A

Contemporary meets traditional! This is the house you have been searching for! Located in a quiet cul-de-sac of the Sought After Community of Douglasdale! Nearby Fish creek park, golf course, Bow river pathway with a GORGEOUS river view! This Beautiful and solid two story house with finished WALKOUT basement! Main floor features a traditional floor plan with front living room for meeting guests, private family room on the back for family relaxation and entertainment, an office/Den, a formal dining or office, a newly renovated kitchen, Gloss finish cabinets with white quartz countertop, A center island with storage. Timeless stainless steel appliances and 2 pc bath completes the main floor. Upper level offers a large master bedroom with a 4-piece en-suite, oversized sink & walk-in closet. 3 additional nicely sized bedrooms & a full bathroom. Walkout Basement offers over 960sf livable space, one large bedroom(non-egress window), a large recreation room, 4 pc bathroom and a wet bar. Two Fireplaces, one on main floor, the other in the basement provide warmth and beatification. New LVP planks on main floor and basement, brand new blinds. A huge maintenance free patio overlooks the fully landscaped backyard to relax and enjoy after a long day work. Get ready for the summer BBQ gathering! Insulated and heated Double attached garage keeps your vehicle warm in the winter. A short walk to the famous bow river trail. Close to all levels of school, library. Enjoy the park, playground, shops, school and lifestyle in one of the best SE communities. You won't be disappointed. Easy to access to Stoney Trail, Deerfoot Trail And Macleod Trail. Come and get this beauty!